
Adobe Connect Student Guide

Roane State Support

CTAT (Center for Teaching Arts & Technology)

Please feel free to contact CTAT with questions regarding Adobe Connect.

ctatmailbox@roanestate.edu

Phone (865) 882-4556

Required Equipment

Headphones

Logitech Headset with microphone. Here are examples listed with different price points.

- [Logitech H110 Headset \(\\$11.87 – Wal-Mart\)](#)
<http://www.walmart.com/ip/14944825?wmlspartner=wlpa&adid=2222222227000000%20000&wlo=&wl1=g&wl2=c&wl3=21486607510&wl4=&wl5=pla&wl6=19880599990&veh=%20sem>
- [Logitech H340 USB Headset \(\\$22.86 – Wal-Mart\)](#)
<http://www.walmart.com/ip/21812231?wmlspartner=wlpa&adid=2222222227000000000&wlo=&wl1=g&wl2=c&wl3=21486607510&wl4=&wl5=pla&wl6=19880599990&veh=sem>
- [Logitech 981-000335 B530 USB Headset \(39.27 - Wal-Mart\)](#)
<http://www.walmart.com/ip/21812231?wmlspartner=wlpa&adid=2222222227000000000&wlo=&wl1=g&wl2=c&wl3=21486607510&wl4=&wl5=pla&wl6=19880599990&veh=sem>

Computer

- Computers are available in scheduled classrooms and/or computer labs.
- If using a computer from home, please see the computer specifications listed below.

Computer Specifications

Windows

- 1.4GHz Intel® Pentium® 4 or faster processor (or equivalent) for Microsoft® Windows® XP, Windows 7 or Windows 8; 2GHz Pentium 4 or faster processor (or equivalent) for Windows Vista®
- Windows XP, Windows Vista, Windows 7, Windows 8
- 512MB of RAM (1GB recommended) for Windows XP, Windows 7 or Windows 8; 1GB of RAM (2GB recommended) for Windows Vista

Mac OS

- 1.83GHz Intel Core™ Duo or faster processor
- 512MB of RAM (1GB recommended)
- Mac OS X, 10.5, 10.6, 10.7.4, 10.8
- No Adobe Connect Add-in support for Mac OS X 10.5 (Leopard). Users on Leopard can attend meetings in the browser.

Linux

- Ubuntu 10.04, 11.04; Red Hat Enterprise Linux 6; OpenSuSE 11.3
- No Add-in support for Linux. Users on Linux can attend meetings in the browser.

Chrome OS

- No Adobe Connect Add-in

Mobile

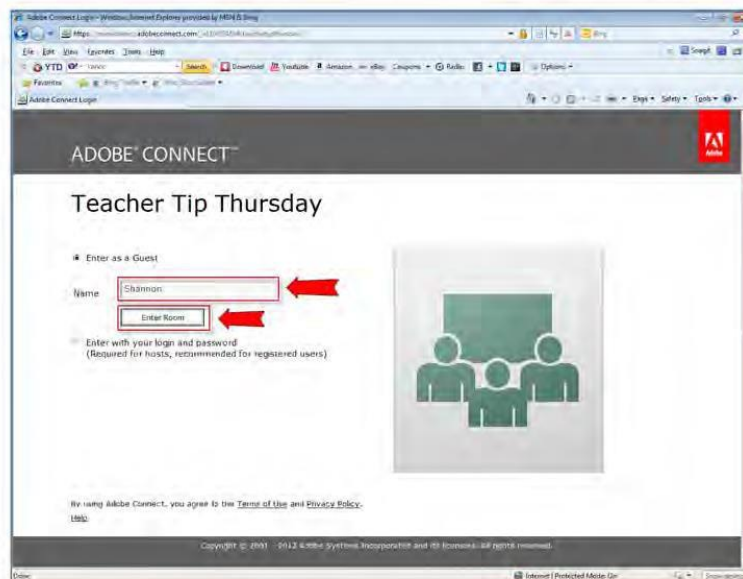
- Apple supported devices: iPhone 5, iPhone 4S, iPad with Retina display, iPad 3, iPad 2, iPad mini, and iPod touch (4th & 5th generations)
- Apple supported OS versions summary: iOS 5 and higher

Adobe Connect Student Guide

- Android supported devices: HTC EVO 4G, Motorola Atrix, Motorola Xoom, Samsung Galaxy Tab 2 10.1, Samsung Galaxy Tab 2 7.0, Samsung Galaxy Tab 10.1, Samsung Galaxy SII/SIII, Nexus 7 tablet
- Android supported OS versions summary: 2.3.4 and higher

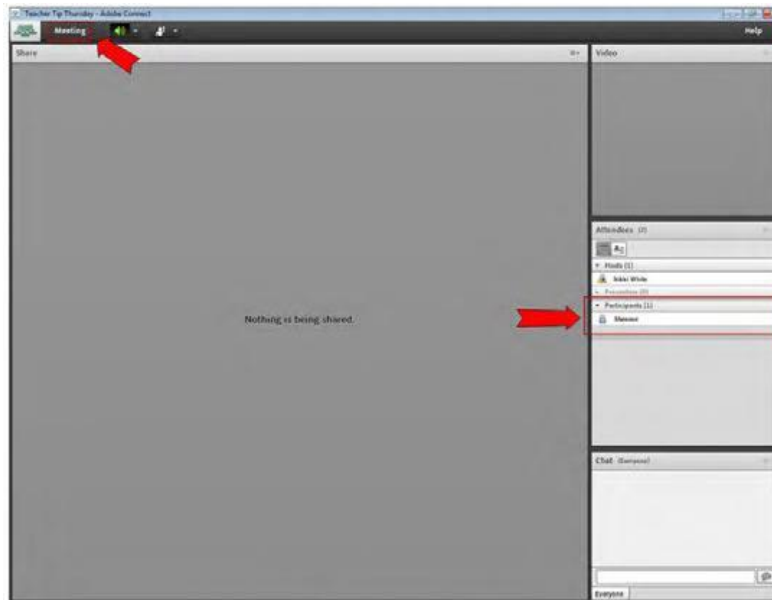
[How to Enter Adobe Connect as a Guest and Set up Audio](#)

1. Follow the link provided. Type your Name and click 'Enter Room'. (Note: It may take a moment for the page to load.)



Adobe Connect Student Guide

2. Adobe Connect will open and you will see your name listed as a participant listed under 'Attendees'. To make sure that your audio is set up, click on 'Meeting' in the upper left hand corner.



2. From the drop down menu, select 'Audio Setup Wizard'.

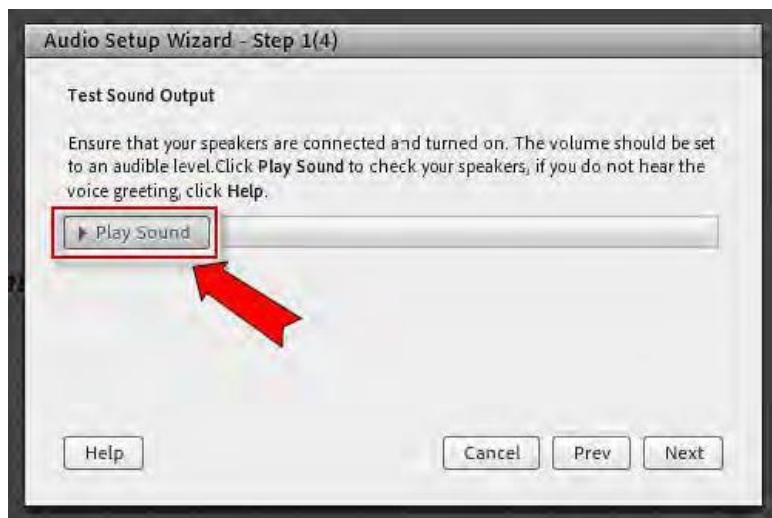


Adobe Connect Student Guide

3. A window will open welcoming you to the Audio Setup Wizard. Click 'Next'. Follow the instructions provided to setup Audio.



4. To test your speakers, click on 'Play Sound'.



Adobe Connect Student Guide

5. You should hear sound to confirm that your speakers are working. Just click 'Stop Sound' and click 'Next' to continue.



6. Next you are testing your microphone. You may need to click the drop-down menu and select the proper microphone to use.



Adobe Connect Student Guide

Once your microphone is selected, click 'Next'.



7. Click the 'Record' button and begin speaking.



Adobe Connect Student Guide

8. You will get a pop up window asking you to allow flash to access your webcam and microphone.

Click 'Allow'.



9. As soon as you click 'Allow' on the Flash Player Settings, the Audio Setup Wizard will begin recording your voice. Speak clearly into your microphone, saying something like "How much wood would a woodchuck chuck, if a woodchuck could chuck wood?" You will see a blue bar moving which indicates your microphone is working. Click 'Stop' to end the test recording.



Adobe Connect Student Guide

10. Click 'Play Recording'. You should hear your recording playback and see the blue bar moving.

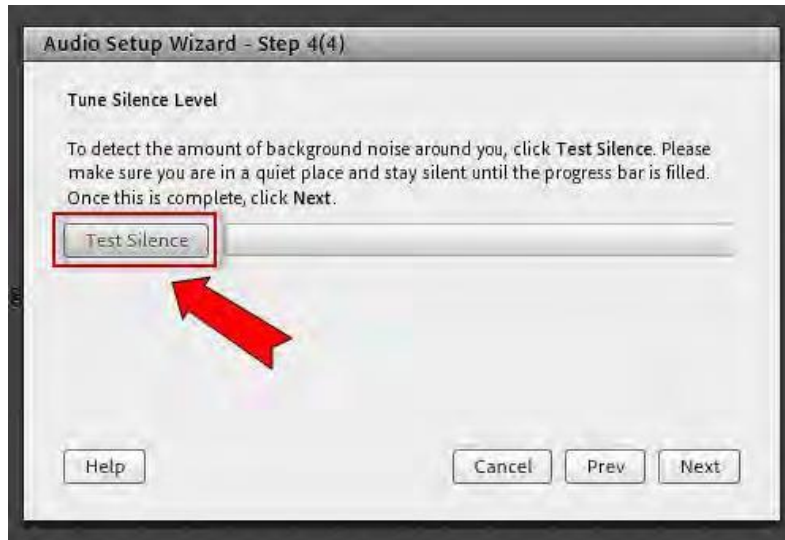


After you've confirmed that your microphone recorded, click 'Stop Playing' and then 'Next'.



Adobe Connect Student Guide

11. Next you will click 'Test Silence'. Sit quietly while the microphone takes a sample of background noise like heaters or cooling systems. This will help to even out the sound quality when you use your mic.



After you've recorded, click 'Stop' and then 'Next'.



Adobe Connect Student Guide

12. Finally, click 'Finish'. Your microphone is now ready to use.

